

# SH 330 SH 350HD

## SH330-3B/SH330LC-3B SH350HD-3B/SH350LHD-3B

- Engine Rated Power :202kW(271HP)
- Operating Weight
  - SH330-3B.....33,000kg
  - SH330LC-3B.....33,600kg
  - SH350HD-3B.....35,200kg
  - SH350LHD-3B.....36,100kg
- Bucket Capacity (ISO heaped) :1.2-1.6m<sup>3</sup>

The ISUZU AA-6HK1X Engine complies with EPA Tier 3 & EU Stage 3A Exhaust Emission Standards

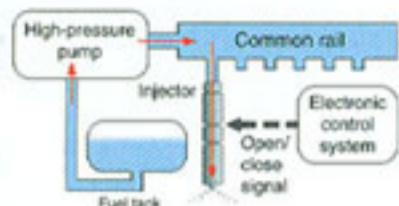


**SUMITOMO**

# Powered by ISUZU diesel offering High-Output, Fuel Efficient & Environmentally Friendly

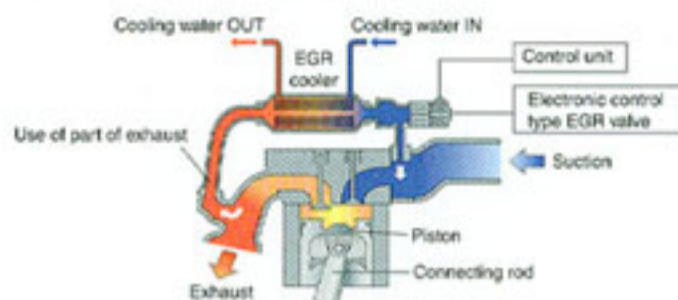
## Common Rail Type Ultra High-Pressure Fuel Injection System

The system is equipped with a common rail type high-compression fuel injection system, which permits high-precision injection from multiple injection under ultra high-pressure of more than 1600 atm. Precise control of injection time and injection quality at that rate of 1/1000 second optimizes combustion, improves combustion efficiency, and reduces PM (particulate matter) substantially.



## Cooled EGR System

The EGR (Exhaust Gas Recirculation) mixes the gas, which is once exhausted, with the air that is taken in so as to lower the combustion temperature, thereby reducing NOx (nitrogen oxide). Adoption of the cooled EGR system, in which a water-cooling cooler is installed in the middle of the re-circulation pipe, permits further decrease in the suction temperature, ensuring a better NOx reduction effect than the ordinary EGR.



## Turbo Engine with Inter-Cooler

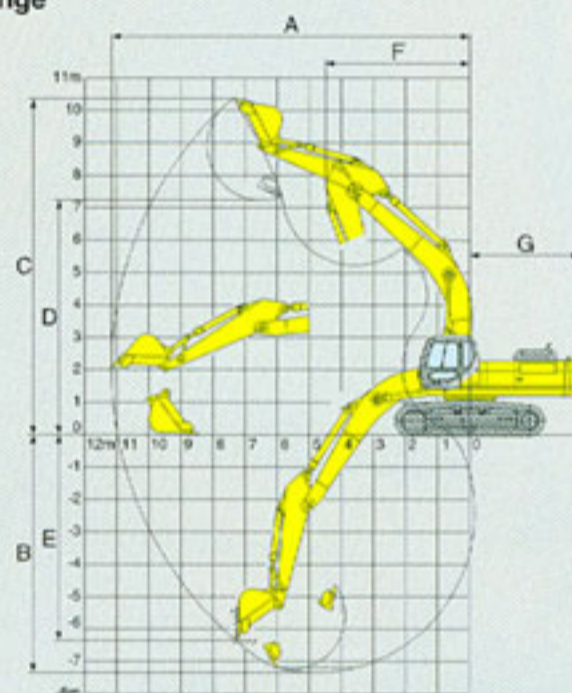
When the inter-cooler cools the intake air, which is compressed by a turbocharger and has reached a high temperature, the density of the air increases and the suction efficiency increases. Therefore, NOx and PM can be reduced substantially, permitting high output and improvement of fuel efficiency simultaneously.

" This revolutionary system has been rigorously tested at our R & D site, and as a result SUMITOMO selected these new ISUZU Engines due to their high level of Performance, whilst ensuring not only excellent environmental performance, but also high output and high fuel efficiency".

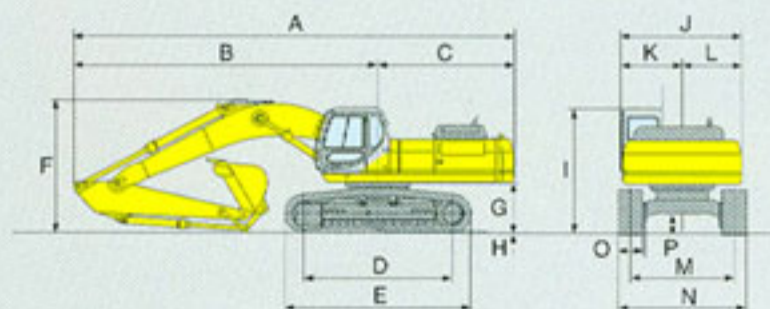
## Principal specifications & Dimensions

	SH330-3B	SH330LC-3B	SH350HD-3B	SH350LHD-3B	
Base	Boom length	6.45 m	6.45 m (HD type)		
	Arm length	3.25 m	3.25 m (HD type)		
	Bucket capacity (ISO heaped)	1.40 m <sup>3</sup>	1.40 m <sup>3</sup> (HD type)		
Engine	Std. Operating weight	33000 kg	33600 kg	35200 kg	
	Make & Model	ISUZU AA-6HK1X			
	Rated output	202 kW (271 HP) / 2000 min <sup>-1</sup>			
Hydraulic system	Displacement	7790 ml			
	Main pump	Double variable displacement axial piston pumps with regulating system			
	Max pressure (with auto power boost)	34.3 MPa (350 kgf/cm <sup>2</sup> ) / 37.3 MPa (380 kgf/cm <sup>2</sup> )			
	Travel motor	Double variable displacement axial piston pumps			
	Parking brake type	Mechanical lock brake			
Performance	Swing motor	Fixed displacement piston motor			
	Travel speed	5.5/3.2 km/h			
	Traction force	278 kN (28.4 t)			
	Grade ability	70 % (35°)			
	Ground pressure	67 kPa (0.68 kgf/cm <sup>2</sup> )	53 kPa (0.64 kgf/cm <sup>2</sup> )	71 kPa (0.72 kgf/cm <sup>2</sup> )	58 kPa (0.69 kgf/cm <sup>2</sup> )
	Swing speed	9.6 min <sup>-1</sup>			
	Bucket digging force (with auto power boost)	229 kN (23352 kgf) / 248 kN (25289 kgf)			
	Arm digging force (with auto power boost)	164 kN (16723 kgf) / 178 kN (18151 kgf)			
	Fuel tank	580 liters			
	Hydraulic fluid tank	175 liters			
Dimensions	A	11040 mm	11040 mm	11040 mm	11040 mm
	B	7620 mm	7620 mm	7620 mm	7620 mm
	C	3420 mm	3420 mm	3420 mm	3420 mm
	D	3720 mm	4040 mm	3720 mm	4040 mm
	E	4650 mm	4980 mm	4650 mm	4980 mm
	F	3290 mm	3290 mm	3290 mm	3290 mm
	G	1200 mm	1200 mm	1200 mm	1200 mm
	H	36 mm	36 mm	36 mm	36 mm
	I	3120 mm	3120 mm	3120 mm	3120 mm
	J	3040 mm	3040 mm	3110 mm	3110 mm
	K	1545 mm	1545 mm	1555 mm	1555 mm
	L	1495 mm	1495 mm	1555 mm	1555 mm
	M	2600 mm	2600 mm	2600 mm	2600 mm
	N	3200 mm	3400 mm	3400 mm	3400 mm
	O	600 mm	600 mm	600 mm	600 mm
	P	480 mm	480 mm	480 mm	480 mm

## Working Range



	SH330-3B / SH330LC-3B			SH350HD-3B / SH350LHD-3B	
Arm length	3.25 M (standard)	2.63 M (short)	4.04 M (long)	3.25 M (standard)	2.63 M (short)
Bucket capacity (ISO heaped)	1.40 m <sup>3</sup>	1.60 m <sup>3</sup>	1.20 m <sup>3</sup>	1.40 m <sup>3</sup> (HD)	1.60 m <sup>3</sup> (HD)
A Max. digging radius	11170 mm	10670 mm	11900 mm	11170 mm	10670 mm
B Max. digging depth	7340 mm	6730 mm	8140 mm	7340 mm	6730 mm
C Max. digging height	10370 mm	10320 mm	10670 mm	10370 mm	10320 mm
D Max. dumping height	7230 mm	7140 mm	7540 mm	7230 mm	7140 mm
E Max. vertical wall cut depth	6350 mm	5970 mm	7150 mm	6350 mm	5970 mm
F Min. front swing radius	4500 mm	4630 mm	4560 mm	4500 mm	4630 mm
G Rear end swing radius	3450 mm	3450 mm	3450 mm	3450 mm	3450 mm



# SUMITOMO (S.H.I.)

## CONSTRUCTION MACHINERY MANUFACTURING CO., LTD.

731-1 Naganumahara-cho, Inage-ku, Chiba, 263-0001 Japan  
For further information please contact:  
Phone : +81-43-420-1796  
Facsimile : +81-43-420-1907

We are constantly improving our products and therefore reserve the right to change designs and specifications without notice. Illustrations may include optional equipment and accessories and may not include all standard equipment.